

WINTER 2023 / 2024

# INHUIS

UPDATE FROM ROYAL HUISMAN AND HUISFIT



ROYAL HUISMAN

140 1884  
2024  
YEARS

## INSIDE THIS ISSUE

SEA EAGLE WINS | 4

MAKING A DIFFERENCE | 6

SINCE 1884 | 7

INNOVATION | 7

NILAYA: DESTINED FOR GLOBAL STARDOM | 8

THE BIG FISHER IS NEARING COMPLETION | 10

BESPOKE MOTORYACHTS | 11

HOME TO THE WORLD'S FINEST SUPERYACHT BUILDING | 12

SUPERSIZED SAILING YACHTS | 13

WINNERS OF THE HONOURS ANNOUNCED | 14

HUISFIT UPDATE | 16

WALL OF FAME | 20

*Dear Friends,*

Looking ahead to 2024, we will celebrate 140 years of Royal Huisman. Alongside the extensive lineup of vessels delivered since the founding of our shipyard, this milestone anniversary highlights the experience, passion, knowledge, craftsmanship, and creativity of our team of over 350 highly skilled men and women. We believe that our illustrious heritage - combined with leading-edge innovations and our team of best-in-class individuals - is what makes Royal Huisman unique. As a dedicated, fully custom shipyard, our objective is to create a yacht that exceeds expectations: each client's ultimate expression of personal freedom.

In the next edition of Inhuis, we hope to unveil some of the exciting – and so far undisclosed – stealthy sloop Project 404, which we launched earlier this year. Also, we would like to present you the finishing touch and craftsmanship onboard the recently re-delivered “jewel” Atlantide. In this issue you’ll find a selection of our latest news. One story of particular note is about the revolutionary technology used aboard Nilaya. I take personal pride in the investment we've made in the sophisticated 'out-of-the-box' approach to

this yacht's engineering. We have proven that an aluminum yacht is a viable alternative to a carbon yacht for owners seeking enhanced sailing performance along with comfort and greatly reduced noise and vibration.

In addition to high-performance racing sailing yachts, we are equally at home building bespoke motoryachts and supersized sailing yachts up to 100m / 330ft. Furthermore, our team of Huisfit in Amsterdam is dedicated to reviving dreams. Rebuilds, conversions, extended surveys, green solutions, and more. The Huisfit team has been busy (and still is) offering this extensive range of services to the global fleet.

On behalf of the team, I wish you and your loved ones a safe and healthy festive season and all the best for the New Year.

*Jan Timmerman*

CEO Royal Huisman



SEA EAGLE  
WINS  
BEST  
SAIL  
ABOVE  
500GT  
AWARD

"Beautiful schooner from Royal Huisman – a credit to the yard, designer and owner. Emphasizing practicality, comfort, safety, stability, and performance, it impeccably fulfills these criteria. She has clean open desks, modern and sleek lines and good sea keeping abilities."

THE JUDGES OF THE INTERNATIONAL SUPERYACHT SOCIETY AWARDS

The prestigious award was handed out at the "International Superyacht Society Awards of Distinction" gala and bestowed by industry peers. The shipyard team considers it a great honor to receive this acknowledgement from such a distinguished committee. Also, Athos received the "Best Refit" award at this event following her conversion by Huisfit (see also page 16 - 19).

The 81m / 266ft contemporary flybridge schooner Sea Eagle is a true sailing yacht and one of the world's 10 largest sailing yachts. Congratulations to the owners and gratitude on the part of her design and build team, who feel particularly honored by this recognition.

[READ ON](#)

AWARDS WINNING  
SUPERYACHTS

It is not easy to be objective about the quality of your own work. Organizations such as the the International Superyacht Society Awards and their expert, independent juries help to provide an unbiased measure of achievement. Jan Timmerman adds: "On behalf of our team I would like to say that we are very happy and honored with these awards. At the same time and although we have received more than a fair share of such recognition, we are not planning to lean back following this success: we will never forget that a shipyard is only as good as its next boat."

[READ ON](#)

SEA EAGLE during her northern cruising last summer: she is a true sailor's yacht: practical, powerful, safe and easily managed.

- Best Sail above 500 GT, International Superyacht Society Awards 2023
- Best Naval Architecture Sailing Yachts, Design & Innovation Awards 2021





## MAKING A DIFFERENCE

Sustainability is crucially important and superyacht owners and the marine sector obviously want to play their parts.

It is a fact that the level of success resulting from limiting the use of natural resources can vary greatly. Some design and build teams are encouraged to make a difference by, for example, making their superyachts more efficient, or by adopting renewable energy sources.

Yet, propulsion by wind will always beat energy consumption of engines, even when great reductions are achieved. In addition, wind energy is 'free' – of charge, of fumes, and of noise.

And sailing is great fun, too.



Unlike most shipyards today, Royal Huisman has been building sailing vessels since it was founded in 1884. When Jan Huisman opened a yard to build small workboats and fishing boats, the hulls were wooden and so were the clogs the shipwrights wore to stay out of the mud. Many things have changed and the shipyard has evolved from "a local builder of wooden workboats" to

receiving the Royal Warrant nearly 40 years ago while the team innovatively created some of the finest superyachts in the world. The shipyard's core business model has never changed — building unique quality vessels by hand, including 26 yachts measuring longer than 40 metres /131ft.

[EXPLORE](#)

## INNOVATION IN VARIOUS AREAS



Over the years, the shipyard team developed many smart solutions, several of which became industry-trendsetters. Royal Huisman has a rich history of in house innovations that re-shaped industry practices and have been the backbone of the shipyard's success.

One example is the pioneering use of aluminum for yachts and race boats in the 1960s, 70s and 80s. Royal Huisman has built 173 aluminum yachts during the last 60 years and added carbon fiber to its capability last century. The shipyard's latest revolutionary Featherlight™ method is a holistic lightweight approach to yacht building combining various complimentary weight-saving solutions utilizing aluminum and carbon fiber components.

[LEARN MORE](#)



“The boat is approximately 15% lighter than what they normally build.

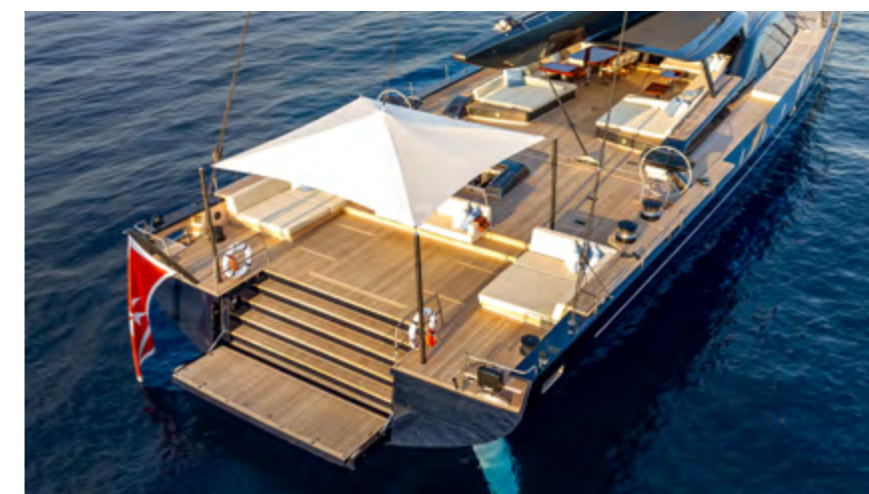
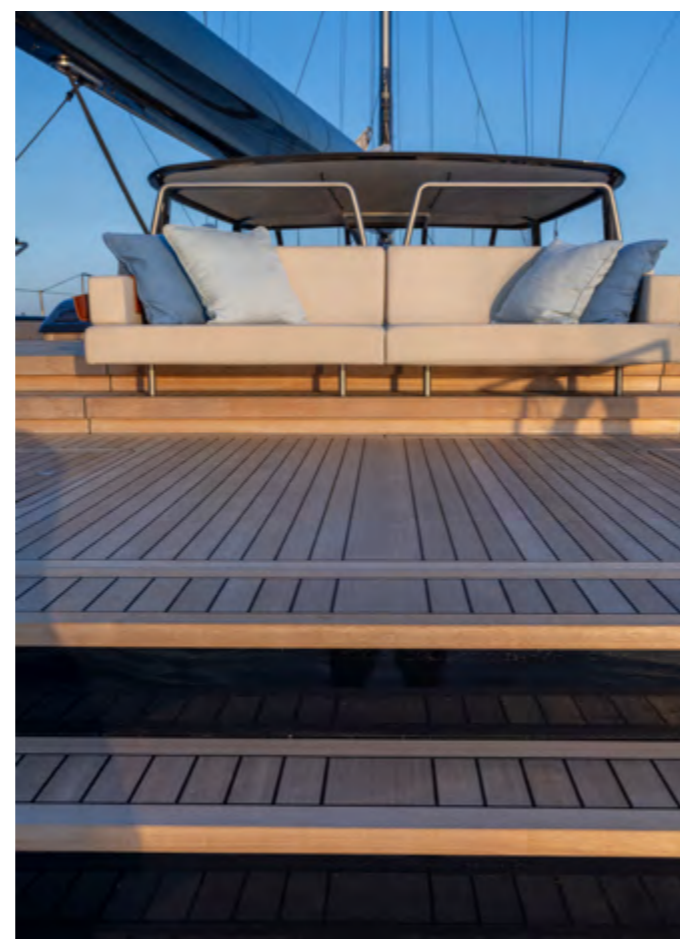
We just finished an Atlantic crossing and I must admit that the yacht is very comfortable and fast.”

NILAYA'S OWNER

### NILAYA'S ARRIVAL IN ANTIGUA SIGNALS THIS NO-COMPROMISE CRUISER IS READY TO RACE

The shipyard's latest 47m / 154ft Panamax sloop, the Reichel / Pugh - Nauta Nilaya, sailed into English Harbour, Antigua, late in November after a fast Atlantic crossing that gave her owner and renowned pro race team captain Bouwe Bekking as well as full-time skipper Romke Loopik plenty of all-conditions experience at the helm. Delivered to her owners in June, Nilaya spent the summer cruising in the Med and tuning up for racing.

With this pause before the **St. Barth's Bucket** and with over 10,000nm under her keel, Royal Huisman can shine a spotlight on the yacht that pioneered the shipyard's comprehensive Featherlight™ approach. Delivering on the owners' brief for speed, safety, reliability and silence, Royal Huisman and Nauta Design explored every option to produce a bluewater cruiser packed with luxury amenities that blends the strength and motion of an aluminum hull with the speed and displacement weights common to carbon fiber maxi yachts.



NILAYA 47M / 154FT - GENERAL CONCEPT, EXTERIOR + INTERIOR DESIGN: NAUTA DESIGN NAVAL ARCHITECTURE: REICHEL / PUGH - OWNERS' NEWBUILD REPRESENTATIVE: NIGEL INGRAM, MCM NEWPORT - CARBON PANAMAX RIG + SAIL HANDLING: RONDAL

The shipyard won the bid to produce arguably the most advanced sailing yacht it has yet delivered. The shipyard team created an engineering approach based on European Space Agency methodology.

The result is that Nilaya is a true aluminum / carbon hybrid. Continuous weight monitoring throughout the build achieved the ambitious goal of slicing 11% of the construction weight of its typical advanced aluminum cruising yachts with equipment, sailing and mechanical systems and interior furnishings creating more savings for a 15% total reduction. Most importantly, it has achieved weight reduction without sacrificing stiffness or cutting corners on quality, and without the noise typical of high-end carbon fiber hulls.

[LEARN MORE](#)



## THE BIG FISHER IS NEARING COMPLETION

Project 406 has left Hall 2 of the shipyard's newbuild facilities in Vollenhove for installation of her upper deck, sun awning hardtop and radarmast. This exceptional Alustar® aluminum motor yacht is the world's largest true sportfish yacht, with her towering profile accommodating six decks, and her powerful hull measuring 52m / 171ft overall. She is fitted out without compromise for both high end sportfishing and luxurious living.

[READ MORE](#)

## BESPOKE MOTORYACHTS WITHOUT COMPROMISE

Not only is Project 406 the largest but, without doubt, the most bespoke, finely appointed, meticulously engineered and most impressive true sportfish yacht anywhere in the world - with all the amenities expected of a superyacht. Likewise the individual aspirations and challenges of 58.5m / 192ft Project 403, PHI, were well outside the comfort zone of many other yards. Phi has become the world's longest motoryacht below 500GT (based on current Classification rules) when she was delivered in 2021. Benefitting from expert advice, both owners took their highly distinctive visions to Royal Huisman, where these fresh opportunities for creative problem-solving and innovation were enthusiastically welcomed.

[READ MORE](#)



THE TESTING OF MOST BOARD SYSTEMS AND OTHER INNOVATIVE TECHNICAL INSTALLATIONS IS CURRENTLY NEARING COMPLETION BEFORE HER FINAL TRANSPORT, UPCOMING LAUNCH AND TRIALS.

**PROJECT 406** - 52M / 171FT SIX-DECK, SPORTFISH SUPERYACHT - EXTERIOR, INTERIOR DESIGN AND NAVAL ARCHITECTURE: VRIPACK YACHT DESIGN  
OWNER'S REPRESENTATIVE: PASCARELLI CONSULTING (WORKING WITH BUSH & NOBLE AND HAMPSHIRE MARINE)



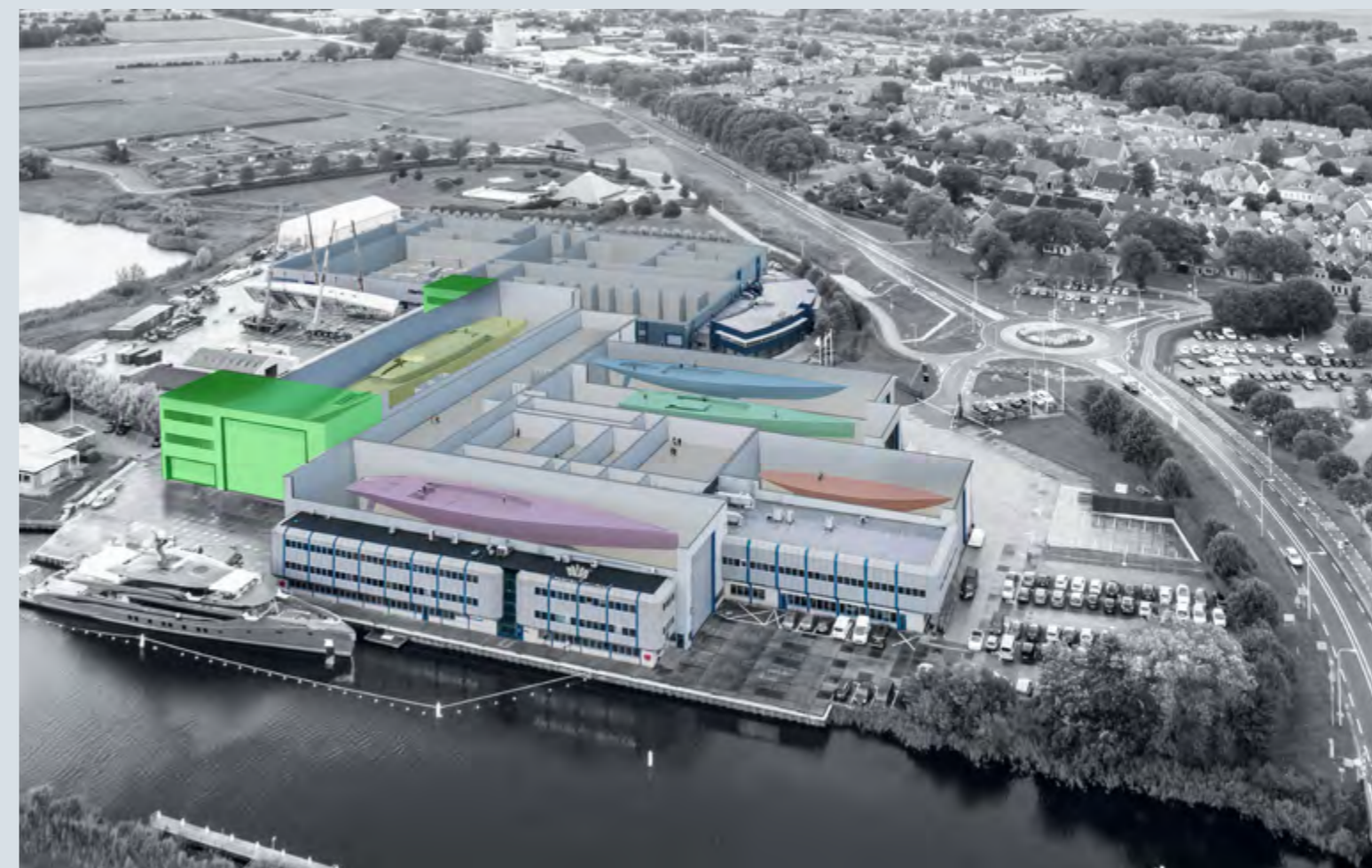
PROJECT 406, THE WORLD'S LARGEST TRUE SPORTFISH YACHT, IN FRONT OF THE NEW OFFICES FOR ENGINEERING, PRODUCTION AND OWNER'S REPRESENTATIVES AS WELL AS THE RECENTLY LENGTHENED HALL 2 AND ADVANCED COMPOSITES HALL.

## HOME TO THE WORLD'S FINEST SUPERYACHT BUILDING

The shipyard in Vollenhove is quite a shipyard with a total area of 30,000sqm / 322.900sqft. There are five main shipbuilding halls, together with numerous individual facilities for carbon composite construction, interior, painting and systems engineering, mast construction, hatches, deck equipment, hydraulics and much more. All purpose-built and superbly equipped to give some of the most talented people in the industry free rein to create some of the finest superyachts on the oceans.

Royal Huisman employs a team of over 350 highly motivated and competent people, from skilled craftsmen to expert concept designers, with extraordinarily diverse experience and capabilities. The newbuild facilities are buzzing with various projects like Project 408 (65m / 212ft performance ketch Aquarius II) for repeat clients, Project 406 (52m / 171ft true sportfish yacht) and Project 410 (85m / 280ft New World Sloop). In parallel, the team of Huisfit – with its headquarters in Amsterdam – is taking care of various refit projects.

[LEARN MORE](#)



## SUPERSIZED SAILING YACHTS BY ROYAL HUISMAN

Two of the world's ten largest sailing yachts, Athena and Sea Eagle, are Royal Huisman builds. Currently "under construction" Project 410 will join the top 10 upon delivery.

With important capital investments in shipyard infrastructure, including expanding Hall 2 and the Advanced Composites Hall, the shipyard team has started the 85m / 280ft aluminum hull construction of Project 410. This New World Sloop designed by Mani Frers with an interior by Wetzels Brown will be the world's largest sloop. The next supersized sailingyacht will be a fitting match in the world's top 10...

[LEARN MORE](#)



PROJECT 410, THE 85M / 280FT NEW WORLD SLOOP - NAVAL ARCHITECTURE + EXTERIOR STYLING: FRERS DESIGN - INTERIOR DESIGN: WETZELS BROWN - RIG + INTEGRATED SAILING SYSTEM: RONDAL

# WINNERS OF THE HONOURS ANNOUNCED

**Congratulations to the winners of The Honours, which recognise the world's most inspirational people in superyachting. The first three recipients of a coveted Bowsprit award were celebrated at the inaugural Honours event in Monaco.**

Ocean conservation advocate and philanthropist Wendy Schmidt, superyacht First Officer and industry DEI proponent Jenny Matthews, and business strategist turned Director at YachtAid Global Zoran Selakovic were feted at a special dinner event. The Honours was conceived as an opportunity for the superyacht industry to recognise the extraordinary people making a difference behind the scenes, taking the focus away from the yachts and placing the spotlight firmly on the good that happens in the day-to-day superyachting life.



## FIVE QUESTIONS FOR WENDY SCHMIDT WINNER OF THE HONOURS

Wendy Schmidt is an American philanthropist and investor who is president of the Schmidt Family Foundation, which she founded with her husband Eric in 2006. She also serves as president of Schmidt Ocean Institute, which the couple founded in 2009 to advance oceanographic research by offering scientists access to a state-of-the-art research vessel at no cost in exchange for making their findings publicly available. She also co-founded 11th Hour Racing to work with the sailing community and maritime industry to advance sustainable solutions and practices that protect and restore ocean health.



RESEARCH VESSEL FALKOR (TOO) OF THE SCHMIDT OCEAN INSTITUTE IS AVAILABLE FOR RESEARCH AND OCEAN SCIENCE

- 1 Where did you grow up, and when was your first introduction to the water and to sailing?
- 2 How has your experience in yacht racing with a team influenced the way you approach philanthropic work?
- 3 Your family foundation's 11th Hour Project places an emphasis on sustainability – how has that translated into 11th Hour Racing, and how are you using the platform to shift people's perspectives both within and outside of the yacht industry?
- 4 What inspired you to set up the Schmidt Ocean Institute, and how is it making an impact on the health of our oceans?
- 5 What role does the yacht industry have in changing things for the better?

[FIND THE ANSWERS](#)





REBIRTH OF A LEGEND: NINETY-THREE YEARS AFTER HER LAUNCH IN 1930 IN DARTMOUTH, ENGLAND, 37M / 122FT ATLANTIDE IS REAWAKENING FULLY RENEWED AT THE HANDS OF SHIPWRIGHTS AND ARTISANS AT HUISFIT.

“Huisfit is leading the way by retrofitting older yachts like Foftein, first delivered in 1999, and Juliet, first delivered in 1993. Juliet had a hybrid engine fitted to reduce her emissions.”

BOATINTERNATIONAL.COM

# REBUILD SOLUTIONS

Atlantide sailed away after a full rebuild with 40 percent of her hull, deck and frames replaced, her interior fully reimagined and every onboard system except her original Gardner diesels fully overhauled or replaced.

Restoration of classics and rebuilds of historical yachts. Huisfit has an established track record of success with such projects. Although rebuild projects by Huisfit are never a “typical refit”, the scope of such projects is widely regarded as a newbuild, both by those involved at the shipyard and by outside observers. Thanks to the owners of historical rebuild projects, these yachts will not become forgotten history: each one will remain a living legend.

[READ MORE](#)

“The hybrid system has been a great upgrade aboard Juliet, decreasing fuel consumption while increasing redundancy for propulsion, maneuvering, and electrical distribution.

We were amazed on the initial sea trials when it became clear that the hybrid system was fully operational and only required parameter adjustments.”

JONATHAN ALLAN  
CAPTAIN OF JULIET



## GREEN SOLUTIONS

Huisfit is offering a wide range of green solutions to reduce the use of energy.

Are you sailing a superyacht with 20th century technology? And keen to embrace all the latest hybrid technology benefits? A conversion by Huisfit from conventional into hybrid is the ultimate systems upgrade with leading-edge propulsion and power generation.

[READ MORE](#)

**HUISFIT**  
BY ROYAL HUISMAN



**HUISFIT**  
BY ROYAL HUISMAN

## FAIR WINDS TO FAIR LADY FOLLOWING A SUCCESSFUL HUISFIT

Fair Lady, the 37m / 121ft motoryacht originally built in 1928, has been thoroughly updated while still maintaining her classic looks thanks to the drive of her owner and the skilled team at Huisfit.

Even though Fair Lady underwent various minor refits over the years, she was due for multiple major upgrades. Following a thorough and rigorous two-phase program at Huisfit, Fair Lady is now ready for the next season and beyond.

[READ MORE](#)

# REVIVE YOUR DREAM

## REFERENCES



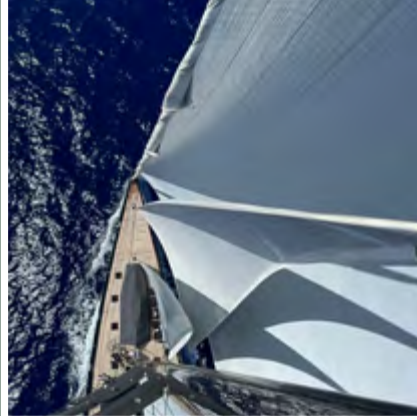
[READ MORE](#)

**HUISFIT**  
BY ROYAL HUISMAN

# WALL OF FAME



The shipyard team is always happy to hear from readers of inhuis. Anyone who comes into contact with our yachts as they explore the oceans of the world.



## #ROYALHUISMAN

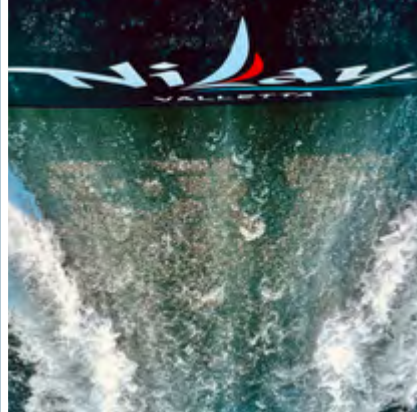
Please post your own photos on social media by adding the hash-tag **#royalhuisman** when you spot one of our yachts in a bay.



## HAVE A LOOK

We look forward to you joining the social media world too. In case you are not hooked up, feel free to have a look.

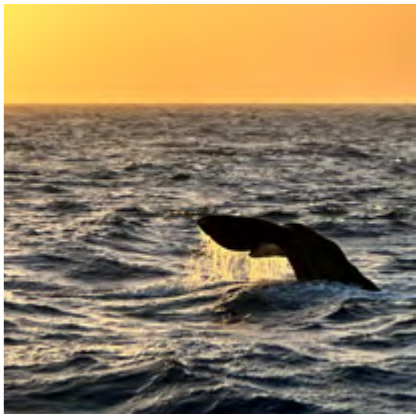
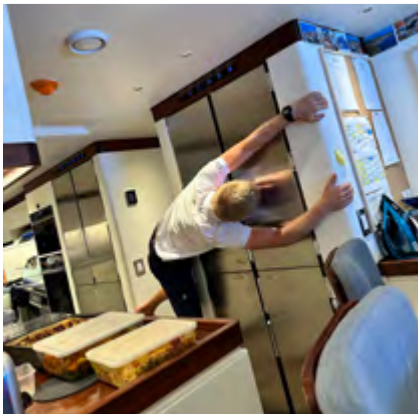
[SEE MORE](#)



## NEWS

Stay updated by reading our announcements, inhuis stories and updates online.

[READ MORE](#)



[SEE MORE](#)

For allowing the use of photos special thanks to owners, representatives and crew of Royal Huisman and Huisfit Project 406, 410, Action, Atlantide, Elfeje, Ethereal, Fair Lady, Juliet, Nilaya, Phi, Sea Eagle, Wisp as well as Jonathan Allan, Carlo Baroncini, Carlo Borlenghi, Jeroen Keep, Martinez Studio, Michael Kurtz, Tim McKenna, Tom van Oossanen, Schmidt Ocean Institute and Yachting Image.

[CONTACT](#)



THE  
ULTIMATE  
EXPRESSION  
OF PERSONAL  
FREEDOM



ROYAL HUISMAN